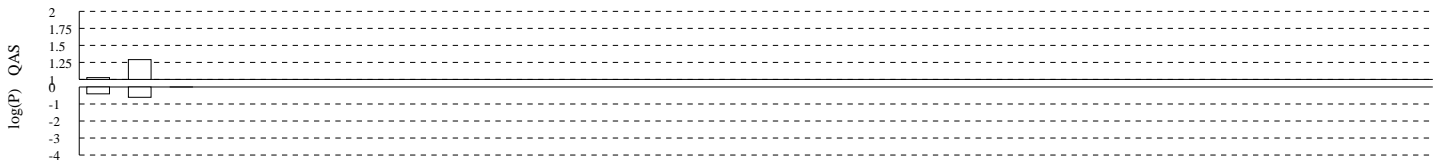


TRAX REPORT for rs11884476

Project: ARG Group A European Americans	Race	Freq 1	Freq 2
Marker: SNP_A-8393199 Maf: 0.06052	Caucasian	917	0.93948
SNP rs ID: rs11884476	Total	917	
Allele 1: C (0.93948) Allele 2: G (0.06052)			
Chromosome: 2 Coordinates: 206,318,593 Gene region: PARD3B			

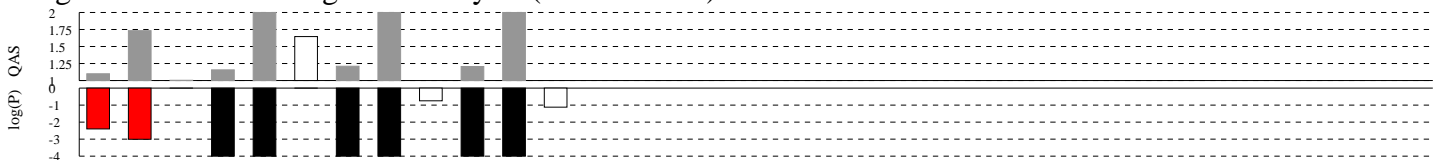
Caucasian	
SC	699
OSN	81
HREU	121
SP	16
Total	917

Infection Tests



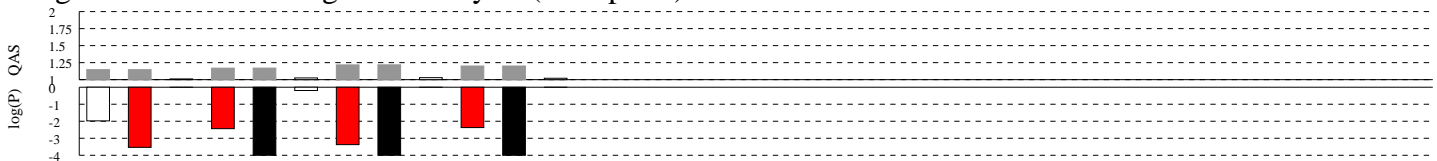
TEST: CD D R
 GRP: H H H
 POP: CA CA CA

Progression disease categorical analysis (dichotomous)



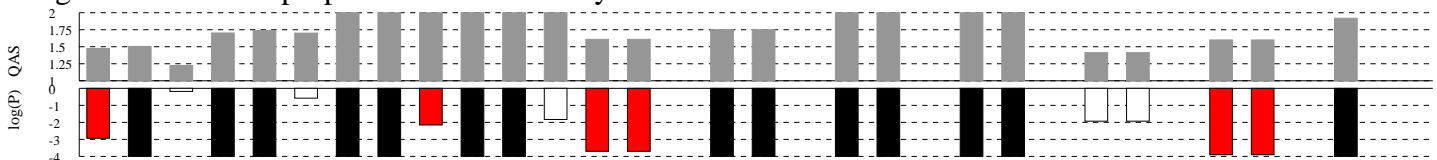
TEST: CD D R CD D R CD D R CD D R
 GRP: CD4 CD4 CD4 93 93 93 87 87 87 DTH DTH DTH
 POP: CA CA CA CA CA CA CA CA CA CA CA CA

Progression disease categorical analysis (multipoint)



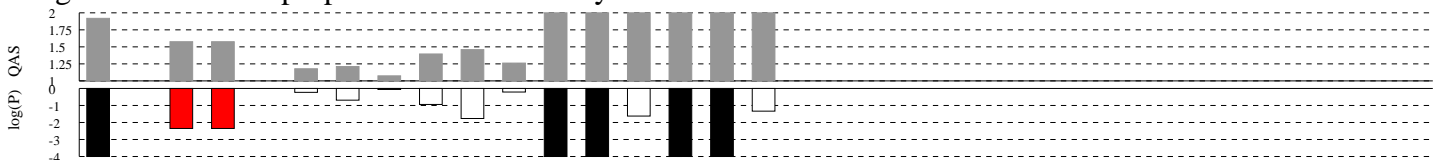
TEST: CD D R CD D R CD D R CD D R
 GRP: CD4 CD4 CD4 93 93 93 87 87 87 DTH DTH DTH
 POP: CA CA CA CA CA CA CA CA CA CA CA CA

Progression survival proportional hazard analysis



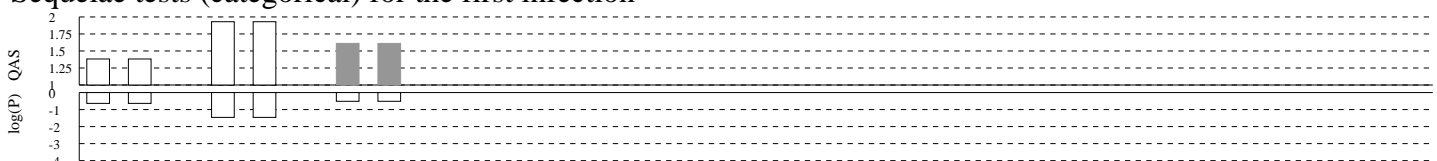
TEST: CD D R CD D R CD D R CD D R CD D R CD D R CD D R CD D R CD D R
 GRP: CD4 CD4 CD4 93 93 93 87 87 87 DTH DTH DTH CD4 CD4 CD4 93 93 93 87 87 87 DTH DTH DTH
 POP: CA

Progression survival proportional hazard analysis



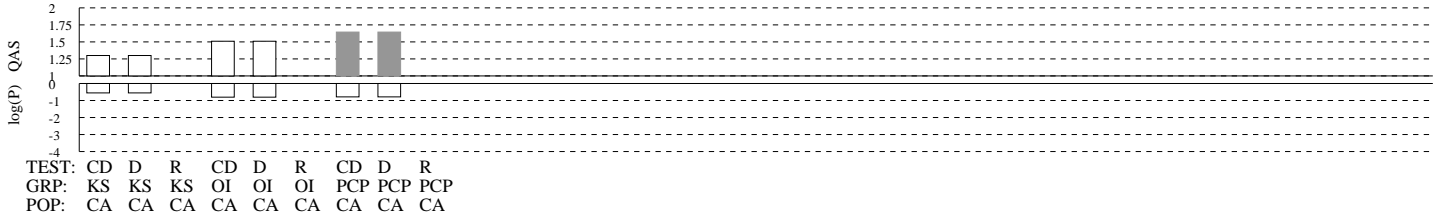
TEST: D R CD D R CD D R CD D R CD D R CD D R
 GRP: 87 87 DTH DTH DTH CD4 CD4 CD4 93 93 93 87 87 87 DTH DTH DTH
 POP: MA MA MA MA MA HE HE HE HE HE HE HE HE HE HE HE HE

Sequelae tests (categorical) for the first infection

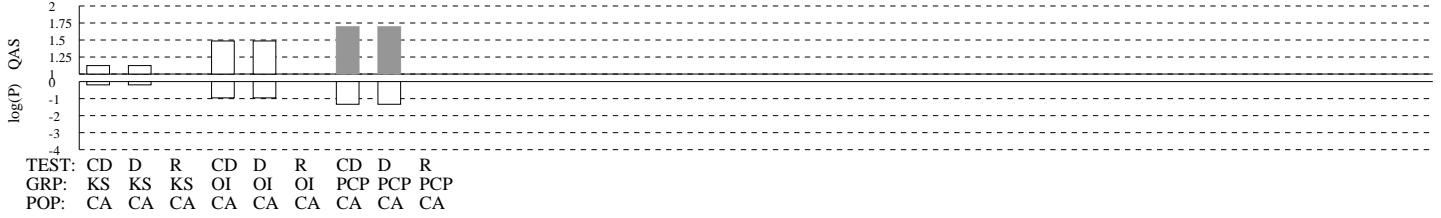


TEST: CD D R CD D R CD D R
 GRP: KS KS KS OI OI OI PCP PCP PCP
 POP: CA CA CA CA CA CA CA CA CA

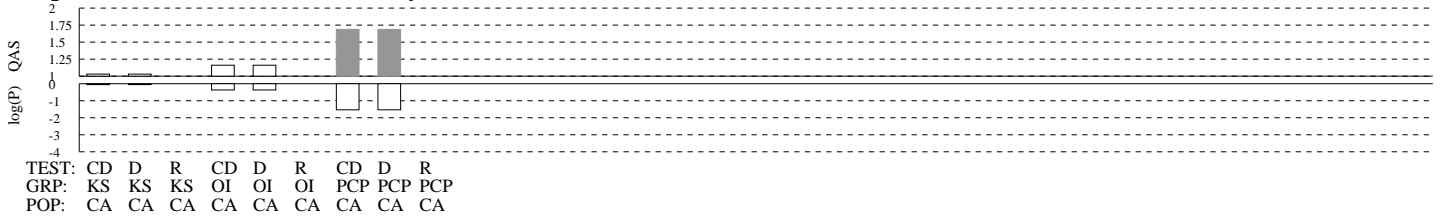
Sequae tests (categorical) for any infection order



Sequae tests (survival) for the first infection



Sequae tests (survival) for any infection order



Black: $QAS > 2$ or $-\log(P) < -4$

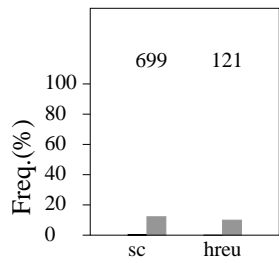
Red: $-4 < -\log(P) < -2$

Gray: $1/QAS$

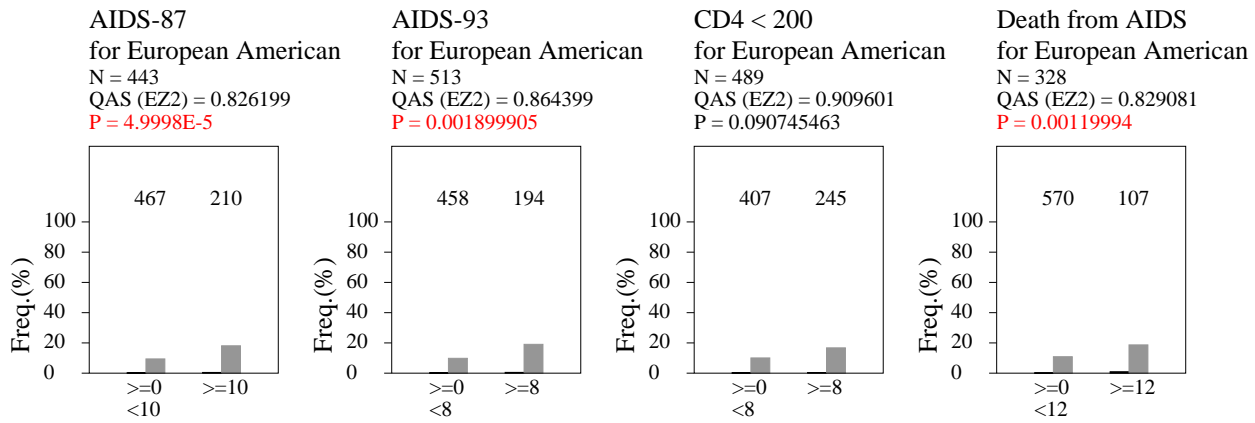
White: QAS or $-\log(P)$

Infection Tests. Genotype: black-2/2, grey-1/2

SC vs. HREU
for European American
N = 820
QAS (EZ2) = 1.026507
P = 0.668066597

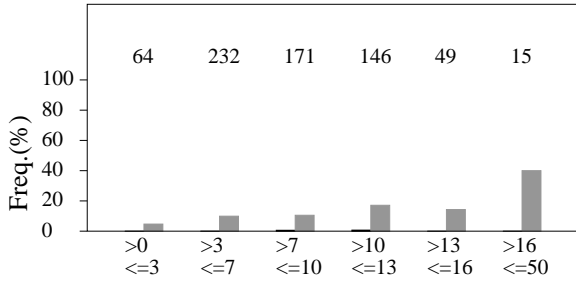


Progression disease categorical analysis (dichotomous). Genotype: black-2/2, grey-1/2

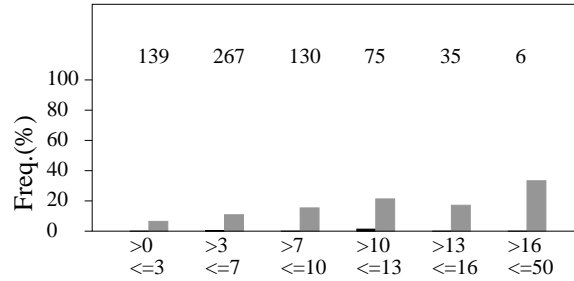


Progression disease categorical analysis (multipoint). Genotype: black-2/2, grey-1/2

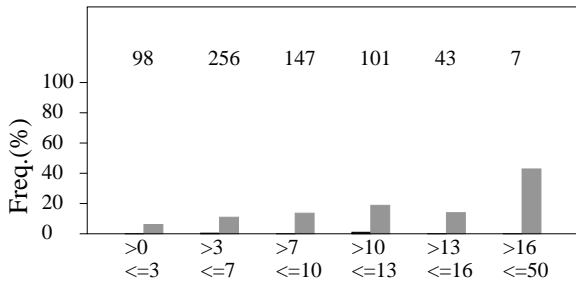
AIDS-87
for European American
N = 443
QAS (EZ2) = 0.821867
P = 0.034248288



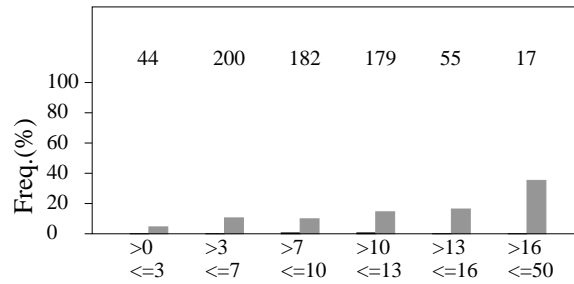
AIDS-93
for European American
N = 474
QAS (EZ2) = 0.855408
P = 0.087545623



CD4 < 200
for European American
N = 432
QAS (EZ2) = 0.8718
P = 0.138443078

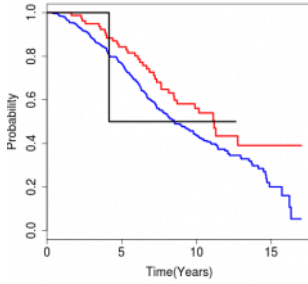


Death from AIDS
for European American
N = 435
QAS (EZ2) = 0.833354
P = 0.093295335

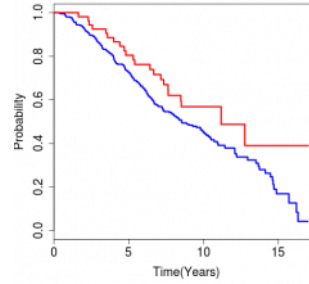


Progression survival proportional hazard analysis. Genotype: blue-1/1, red-1/2, black-2/2

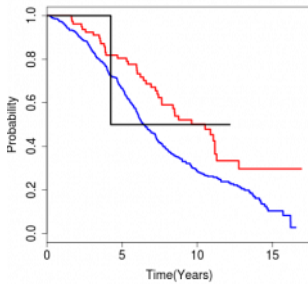
CD4 < 200
for European American
N = 636
QAS (RH) = 0.678448
P = 0.053206094



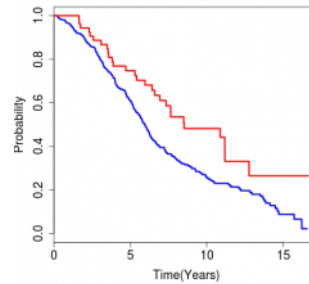
CD4 < 200
for Gays
N = 470
QAS (RH) = 0.621373
P = 0.02469109



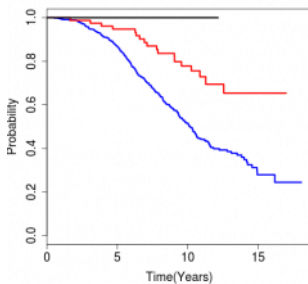
AIDS-93
for European American
N = 636
QAS (RH) = 0.587542
P = 0.001405878



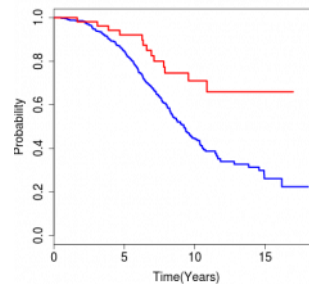
AIDS-93
for Gays
N = 470
QAS (RH) = 0.571219
P = 0.002438975



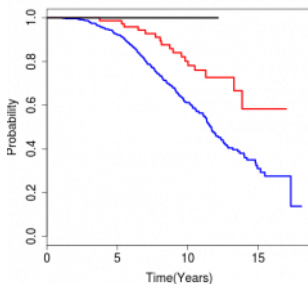
AIDS-87
for European American
N = 661
QAS (RH) = 0.363486
P = 4.703E-6



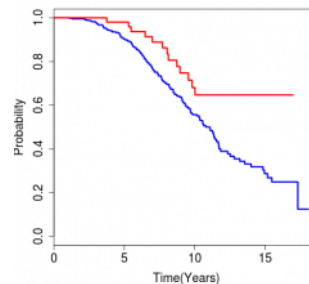
AIDS-87
for Gays
N = 476
QAS (RH) = 0.399621
P = 0.000253772



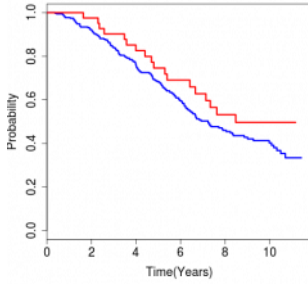
Death from AIDS
for European American
N = 661
QAS (RH) = 0.408697
P = 0.000162005



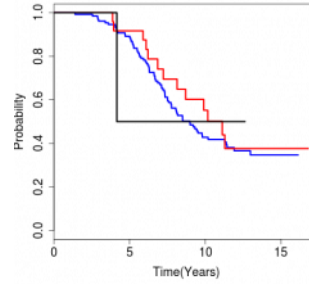
Death from AIDS
for Gays
N = 476
QAS (RH) = 0.4897
P = 0.006043265



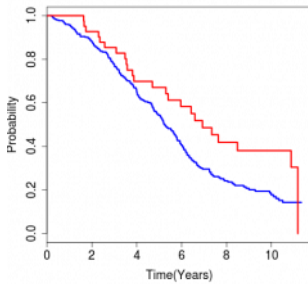
CD4 < 200
for Cohort MACS
N = 397
QAS (RH) = 0.707536
P = 0.145166367



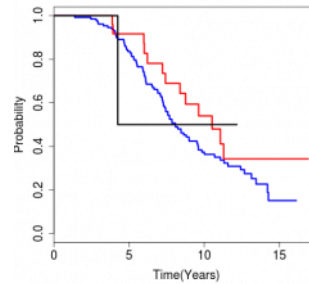
CD4 < 200
for Hemophiliac
N = 155
QAS (RH) = 0.848749
P = 0.79538435



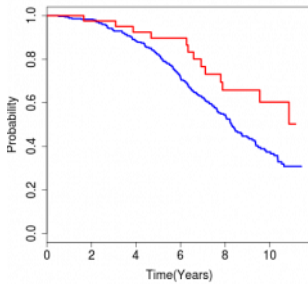
AIDS-93
for Cohort MACS
N = 397
QAS (RH) = 0.625143
P = 0.020208981



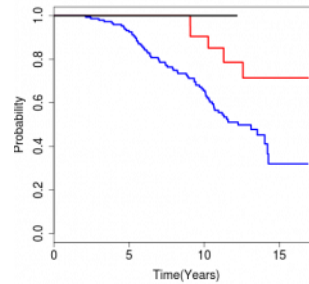
AIDS-93
for Hemophiliac
N = 155
QAS (RH) = 0.716545
P = 0.390470473



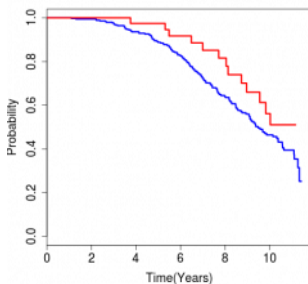
AIDS-87
for Cohort MACS
N = 401
QAS (RH) = 0.521068
P = 0.013155699



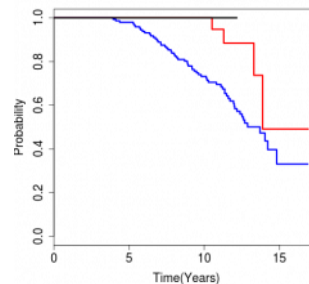
AIDS-87
for Hemophiliac
N = 173
QAS (RH) = 0.332207
P = 0.012499368



Death from AIDS
for Cohort MACS
N = 401
QAS (RH) = 0.634683
P = 0.09521055



Death from AIDS
for Hemophiliac
N = 173
QAS (RH) = 0.298948
P = 0.013720821

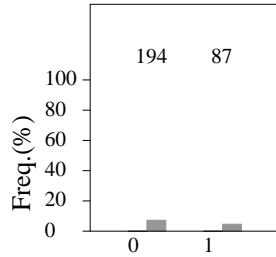
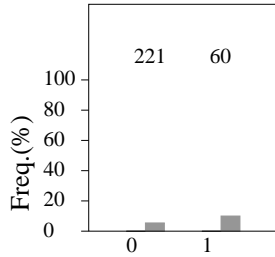
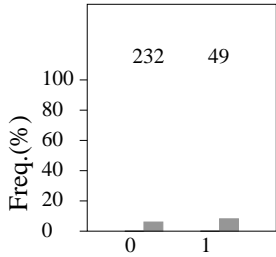


Sequelae tests (categorical) for the first infection . Genotype: black-2/2, grey-1/2

Kaposi sarcoma
for European American
N = 281
QAS (EZ2) = 1.382376
P = 0.529649413

Other oport. inf.
for European American
N = 281
QAS (EZ2) = 1.929997
P = 0.23259811

Pneumocystis Pneumonia
for European American
N = 281
QAS (EZ2) = 0.620587
P = 0.59889701

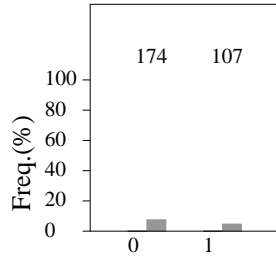
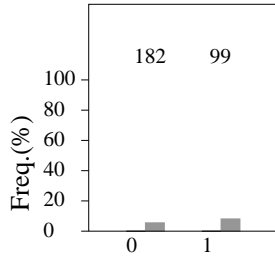
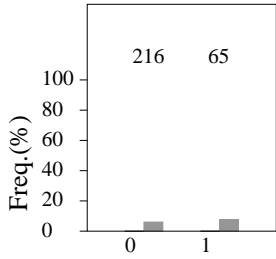


Sequelae tests (categorical) for any infection order . Genotype: black-2/2, grey-1/2

Kaposi sarcoma
for European American
N = 281
QAS (EZ2) = 1.299988
P = 0.575004399

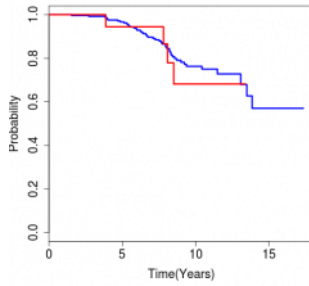
Other opport. inf.
for European American
N = 281
QAS (EZ2) = 1.509821
P = 0.447667787

Pneumocystis Pneumonia
for European American
N = 281
QAS (EZ2) = 0.608102
P = 0.455269145

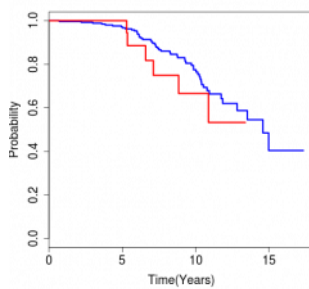


Sequelae tests (survival) for the first infection . Genotype: blue-1/1, red-1/2, black-2/2

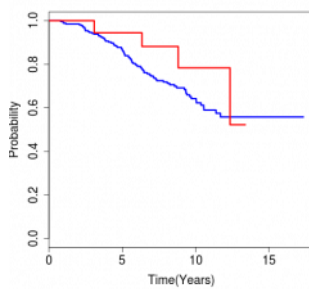
Kaposi sarcoma
for European American
N = 278
QAS (RH) = 1.124221
P = 0.825825465



Other opport. inf.
for European American
N = 278
QAS (RH) = 1.485982
P = 0.384441579

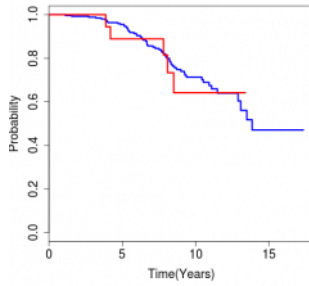


Pneumocystis Pneumonia
for European American
N = 278
QAS (RH) = 0.590162
P = 0.264004295

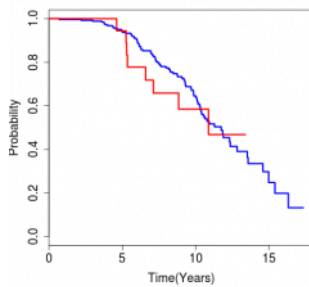


Sequelae tests (survival) for any infection order. Genotype: blue-1/1, red-1/2, black-2/2

Kaposi sarcoma
for European American
N = 278
QAS (RH) = 1.030106
P = 0.949568421



Other opport. inf.
for European American
N = 278
QAS (RH) = 1.160841
P = 0.693214379



Pneumocystis Pneumonia
for European American
N = 278
QAS (RH) = 0.59254
P = 0.215783117

